

**PLUMBING & SANITATION
FROM EARLIEST TIMES**

*Baths and Wash-
-Houses*



Illustrations from PRESENTATION COPY of 1853

*James Simpson Esq.
From the Authors.*

BATHS AND WASH-HOUSES;

AN

ACCOUNT OF THEIR HISTORY;

AN ABSTRACT OF THE

Acts of Parliament relating thereto;

THEIR APPLICABILITY AND ADVANTAGE TO PROVINCIAL TOWNS;

AND A

DESCRIPTION OF THOSE ERECTED UNDER THE
SUPERINTENDENCE OF THE AUTHORS.

TO WHICH IS PREFIXED

AN ACCOUNT OF THE BATHS OF THE ANCIENTS.

“——— labentibus obvius undis
Carpe viam, donec venias ad fluminis ortus,
Spumiferoque tuum fonti, quâ plurimus exit,
Subde caput: corpusque simul, simul elue crimen.”
OVID. MET. lib. xi. 141.

BY

ARTHUR ASHPITEL AND JOHN WHICHCORD,

FELLOWS OF THE SOCIETY OF ANTIQUARIES; FELLOWS OF THE ROYAL INSTITUTE OF
BRITISH ARCHITECTS; ASSOC. INST. CIVIL ENGINEERS, ETC. ETC.

WRITTEN FOR THE ARCHITECTURAL PUBLICATION SOCIETY; AND PRINTED FOR THE
AUTHORS, BY PERMISSION OF THE COMMITTEE.

LONDON:

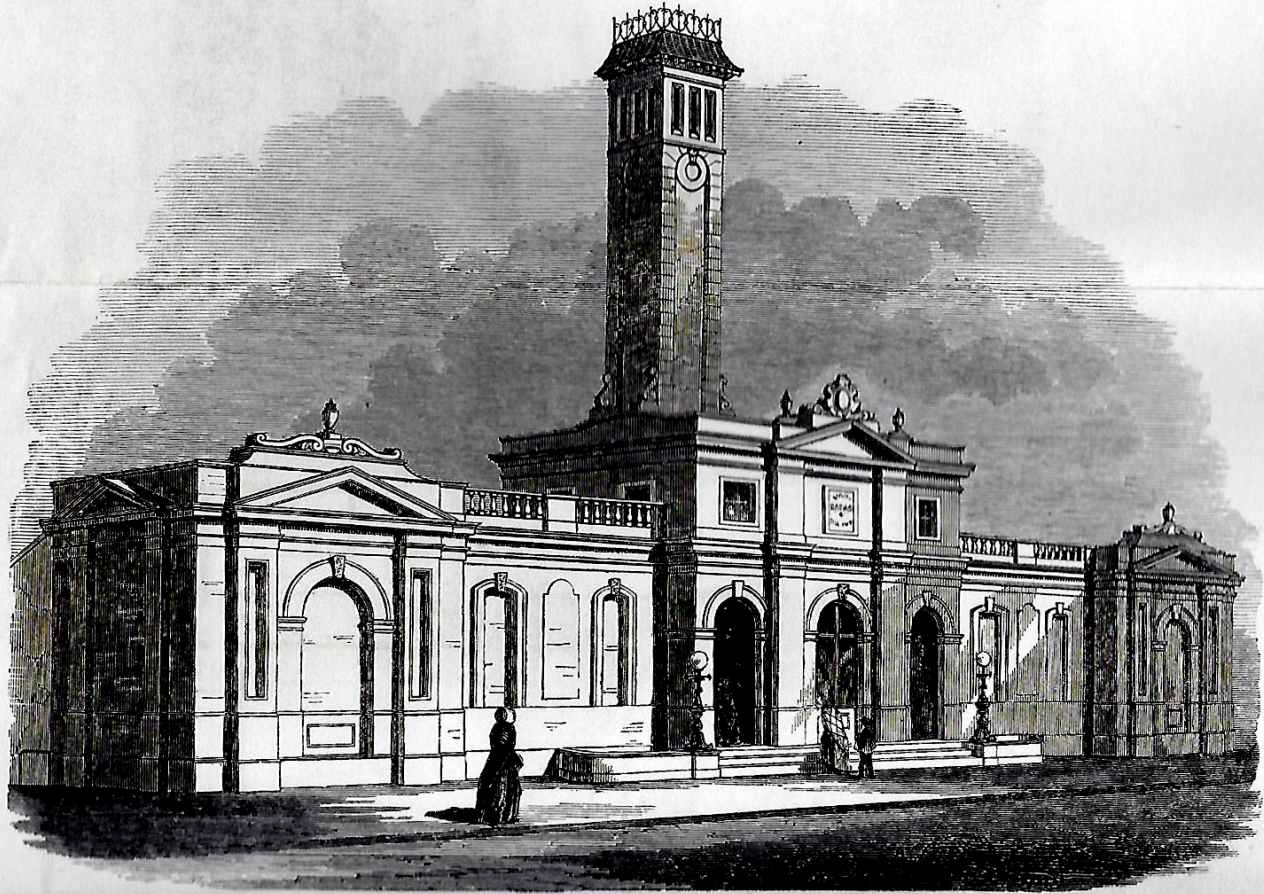
T. RICHARDS, PRINTER, 37, GREAT QUEEN STREET,
LINCOLN'S INN.

M.DCCC.LIII.

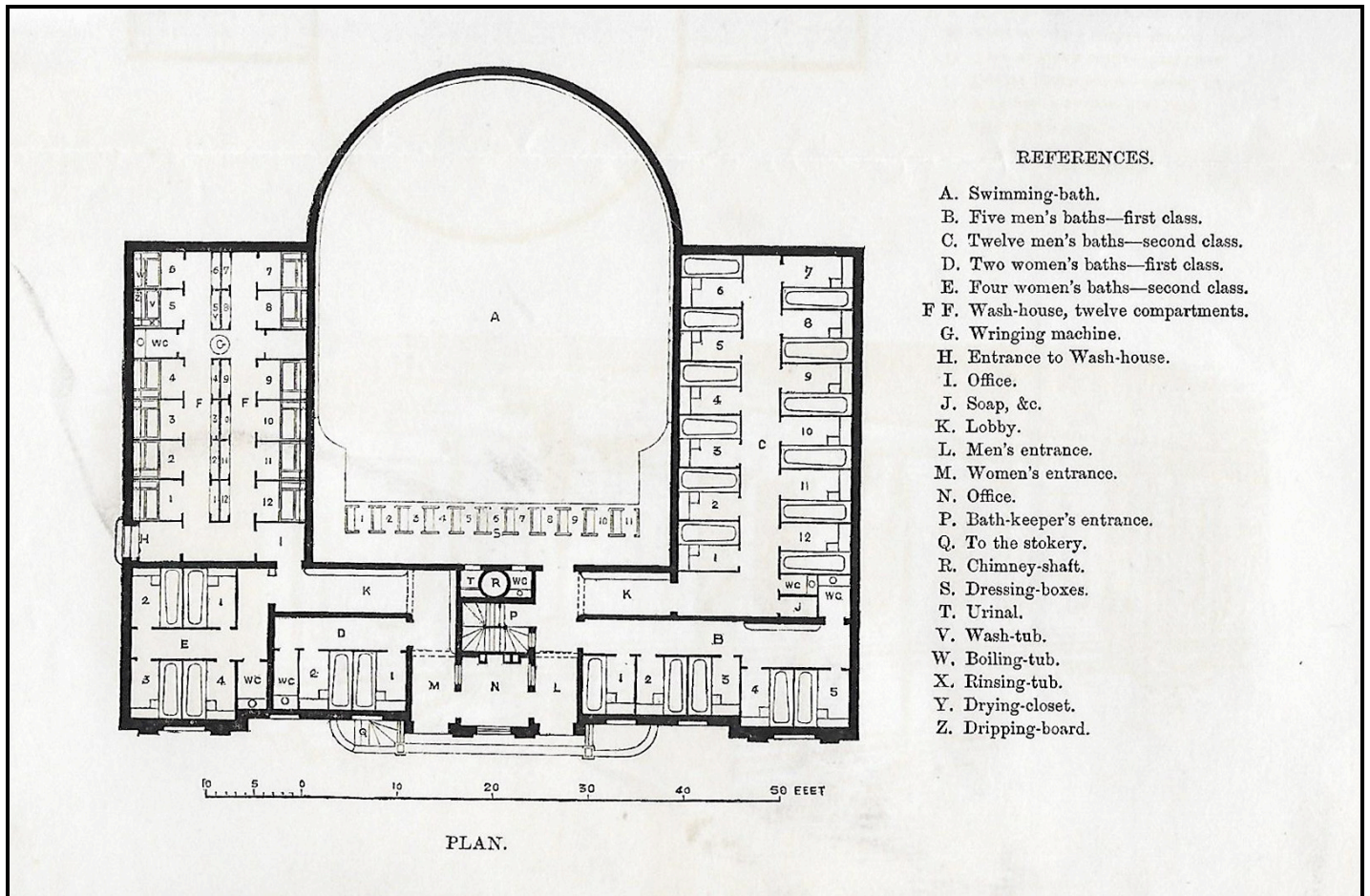
BATHS AND WASH-HOUSES, BILSTON, NEAR BIRMINGHAM.

MESSRS. ASHPITEL AND WHICHCORD,
ARCHITECTS,
8, CARLTON CHAMBERS, ST. JAMES'S.

COST £2,125.



BATHS & WASH-HOUSES, BILSTON Nr BIRMINGHAM

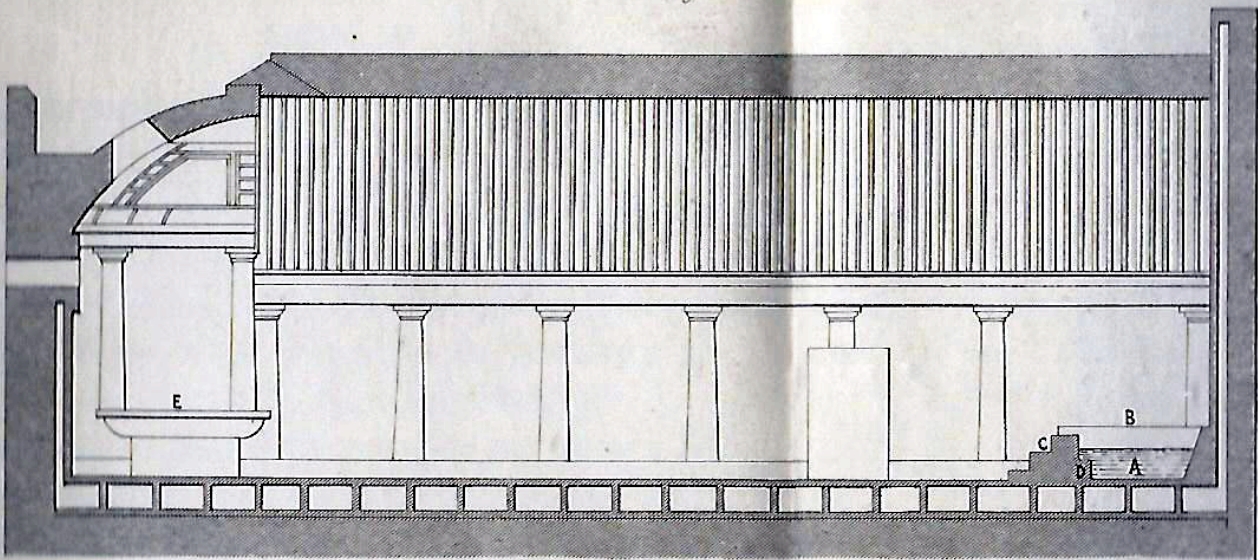


REFERENCES.

- A. Swimming-bath.
- B. Five men's baths—first class.
- C. Twelve men's baths—second class.
- D. Two women's baths—first class.
- E. Four women's baths—second class.
- F F. Wash-house, twelve compartments.
- G. Wringing machine.
- H. Entrance to Wash-house.
- I. Office.
- J. Soap, &c.
- K. Lobby.
- L. Men's entrance.
- M. Women's entrance.
- N. Office.
- P. Bath-keeper's entrance.
- Q. To the stokery.
- R. Chimney-shaft.
- S. Dressing-boxes.
- T. Urinal.
- V. Wash-tub.
- W. Boiling-tub.
- X. Rinsing-tub.
- Y. Drying-closet.
- Z. Dripping-board.

BATHS & WASH-HOUSES, BILSTON Nr BIRMINGHAM

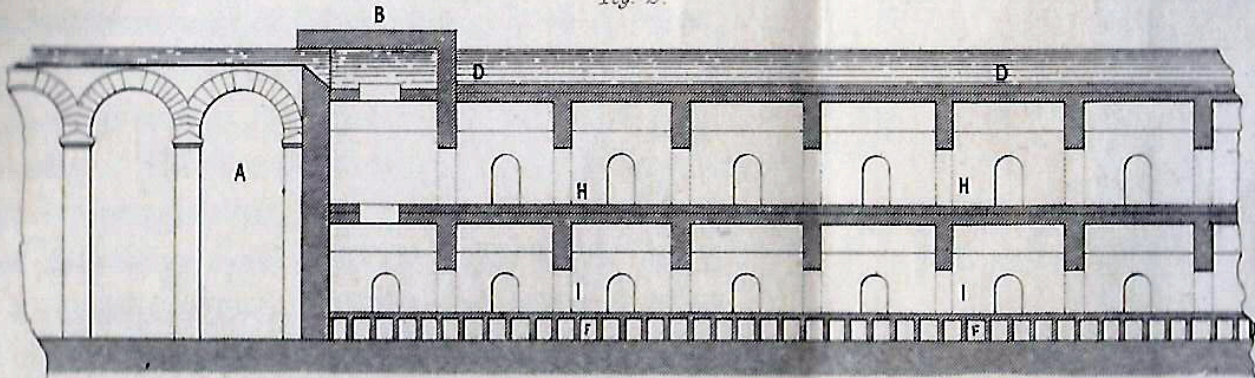
Fig 1.



From Sir Wm Gell's Pompeii

SECTION OF THE CALDARIUM. *
POMPEII.

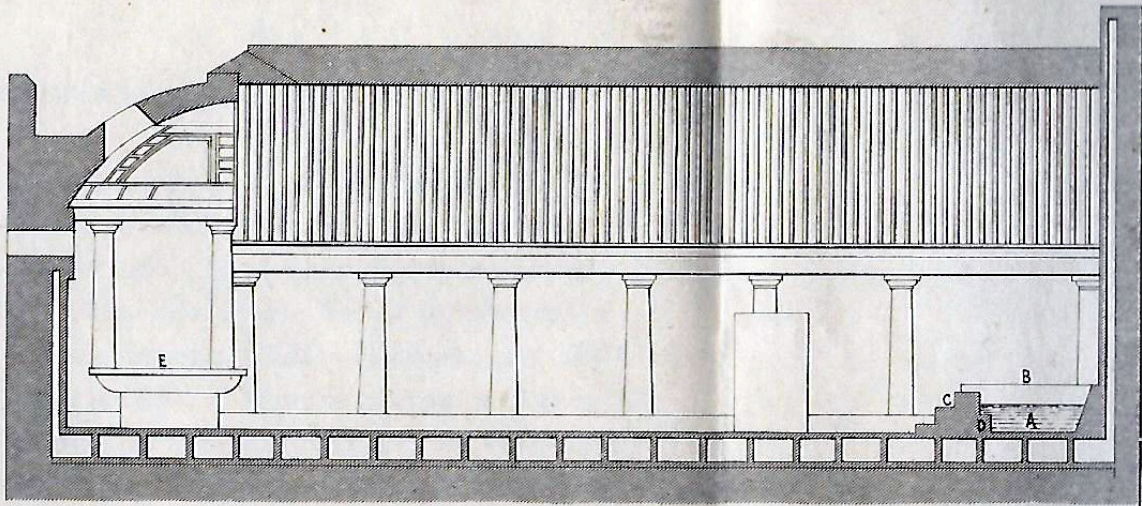
Fig. 2.



CASTELLA OF ANTONINUS

POMPEII CALIDARIUM
CASTELLA of ANTONINUS

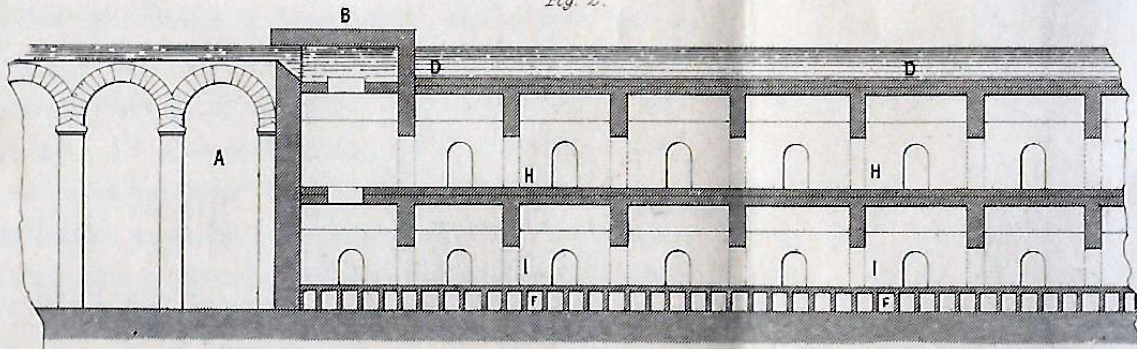
Fig 1



From Sir Wm Gell's Pompeii

SECTION OF THE CALDARIUM. POMPEII.

Fig. 2.



CASTELLA OF ANTONINUS

Fig 4

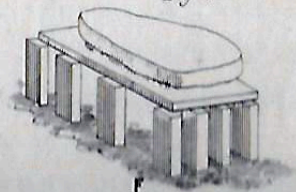


Fig 3

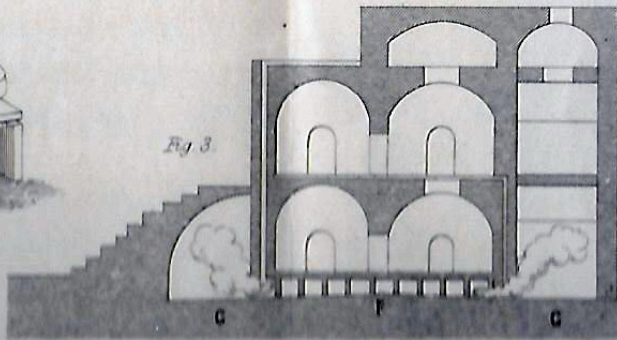
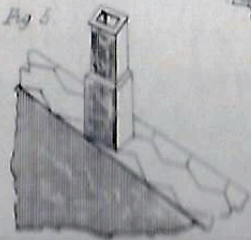


Fig 5



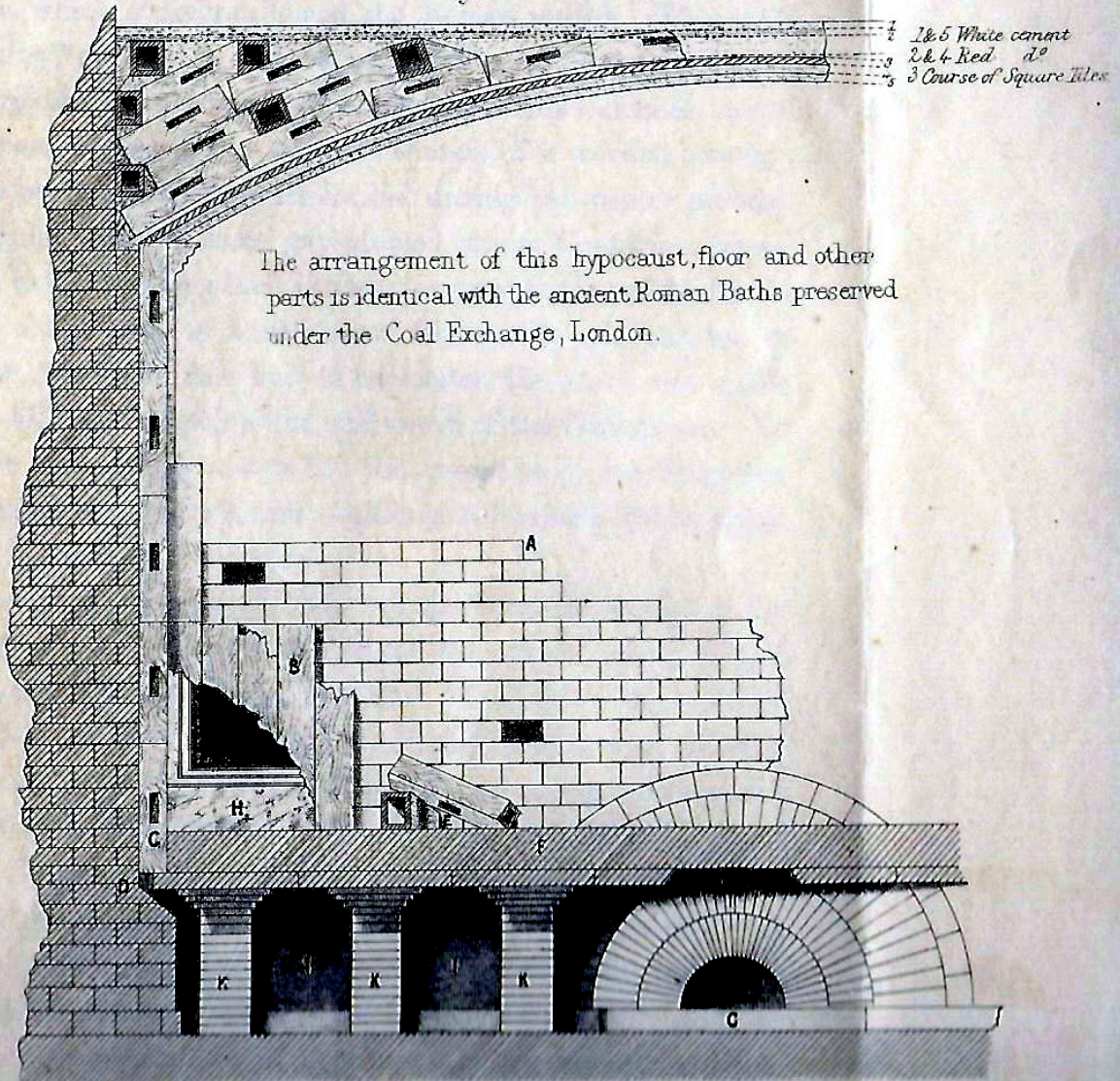
TURKISH BATH

SECTION OF THE HYPOCAUST AND OF ONE OF THE CHAMBERS
OF THE ANCIENT ROMAN BATHS AT AUGST-BASLE, (AUGUSTA RAURACORUM)

shewing the construction of the floors, walls, vaultings &c from a drawing in the possession of Professor Donaldson, copied from the original one by Mons^r Aubert Parent, French Arch^t made on the spot in 1803.

- | | |
|---|--|
| <p>A Solid construction of the walls.</p> <p>B Hollowed bricks attached to face of walls</p> <p>C Section of bricks on walls with holes for current of warm air</p> <p>D Passage for communication of hot air from hypocaust up into the hollowed bricks</p> <p>E Detached hollow bricks.</p> | <p>F Floor formed of cement &c.</p> <p>G Opening of the furnace</p> <p>H Plastering coating laid on the hollowed bricks and decorated with paintings</p> <p>I The Hypocaust</p> <p>K Square brick piers with cappings surmounted by large square tiles or bricks to receive the cement floor</p> |
|---|--|

Fig. 3



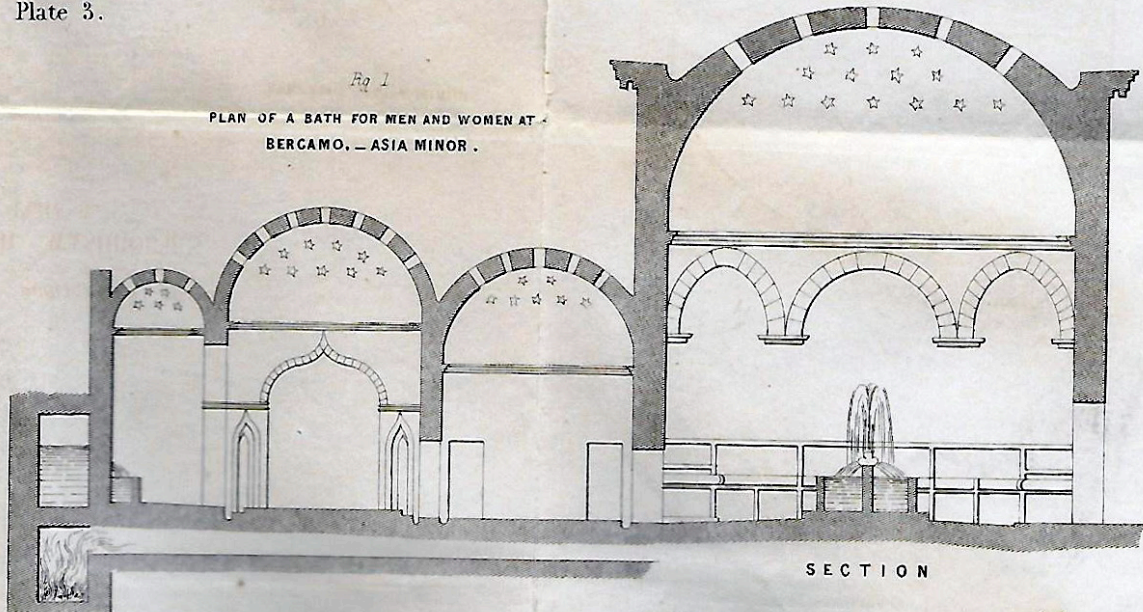
Scale of English Feet.

ROMAN BATHS & HYPOCAUST, BASLE

BATHS AND WASHHOUSES.
Plate 3.

Fig 1

PLAN OF A BATH FOR MEN AND WOMEN AT
BERGAMO, — ASIA MINOR.



SECTION

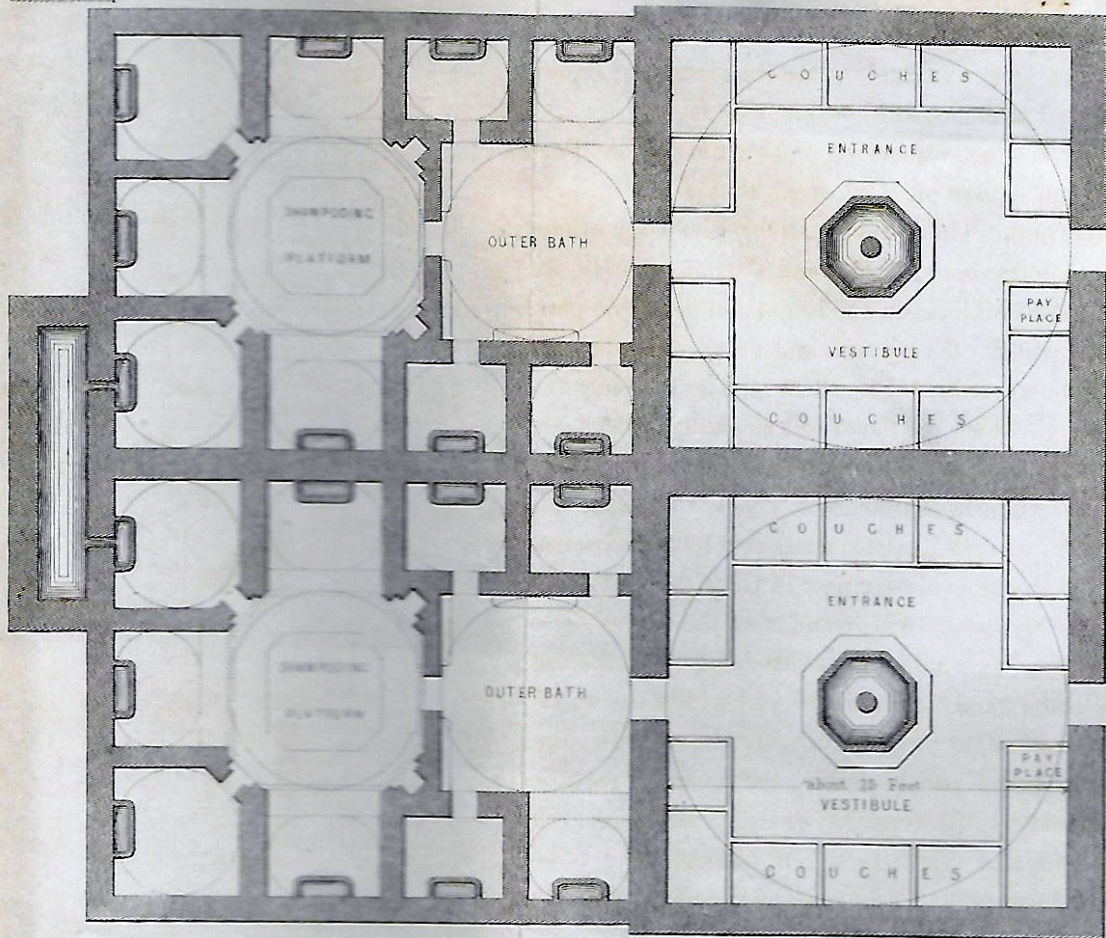


Fig 2

WOMEN'S BATH
MEN'S BATH
STREET

PLAN

by Vincent Brooks 422 Oxford St. E.P. 1863

Measured and Drawn by Thos. Dinsmore, M.I.C.A. 1860.

BATHSAT BERGAMO, ASIA MINOR

BATHS AND WASHHOUSES.
Plate I.

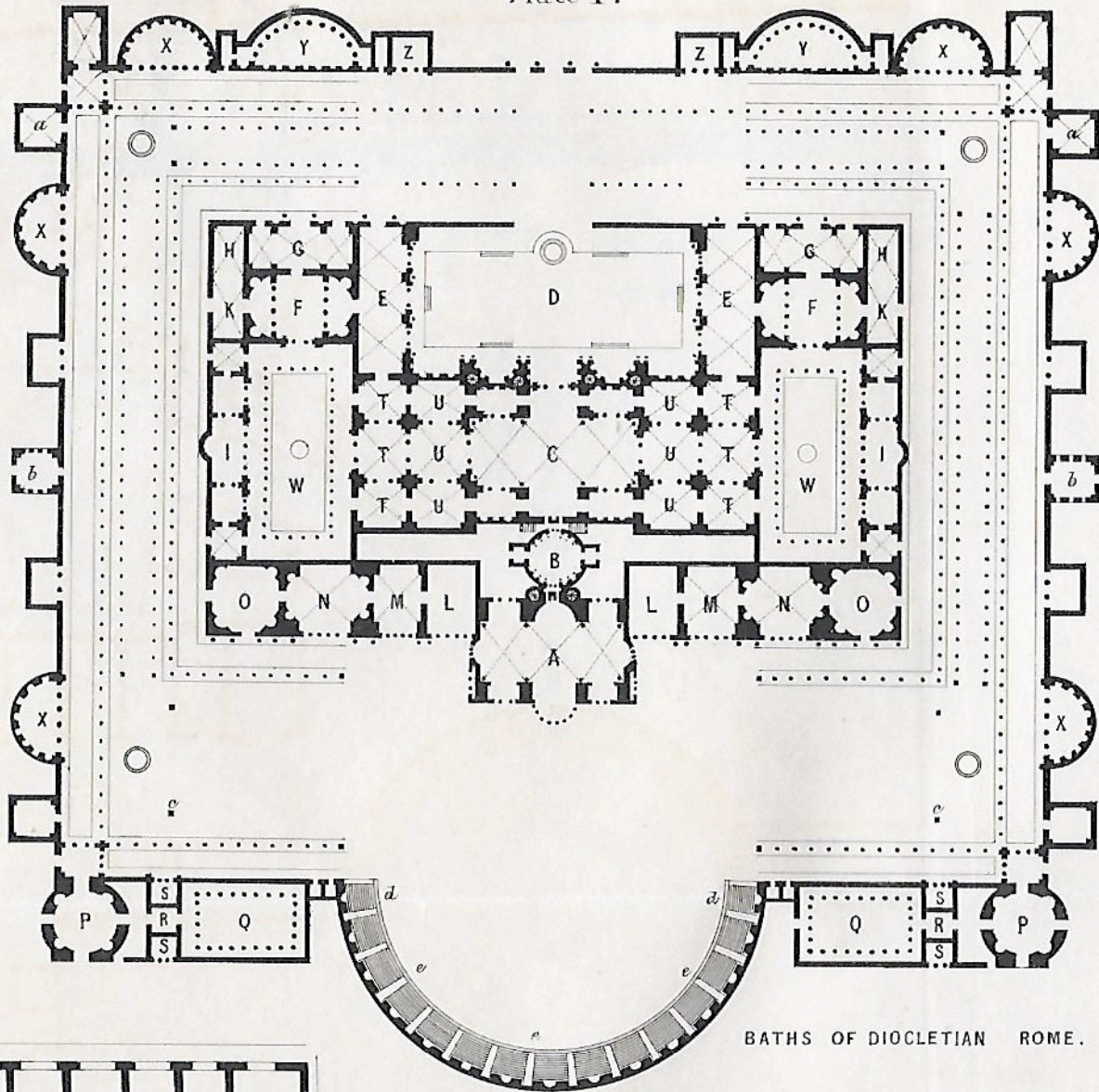
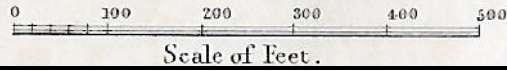
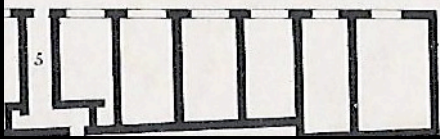
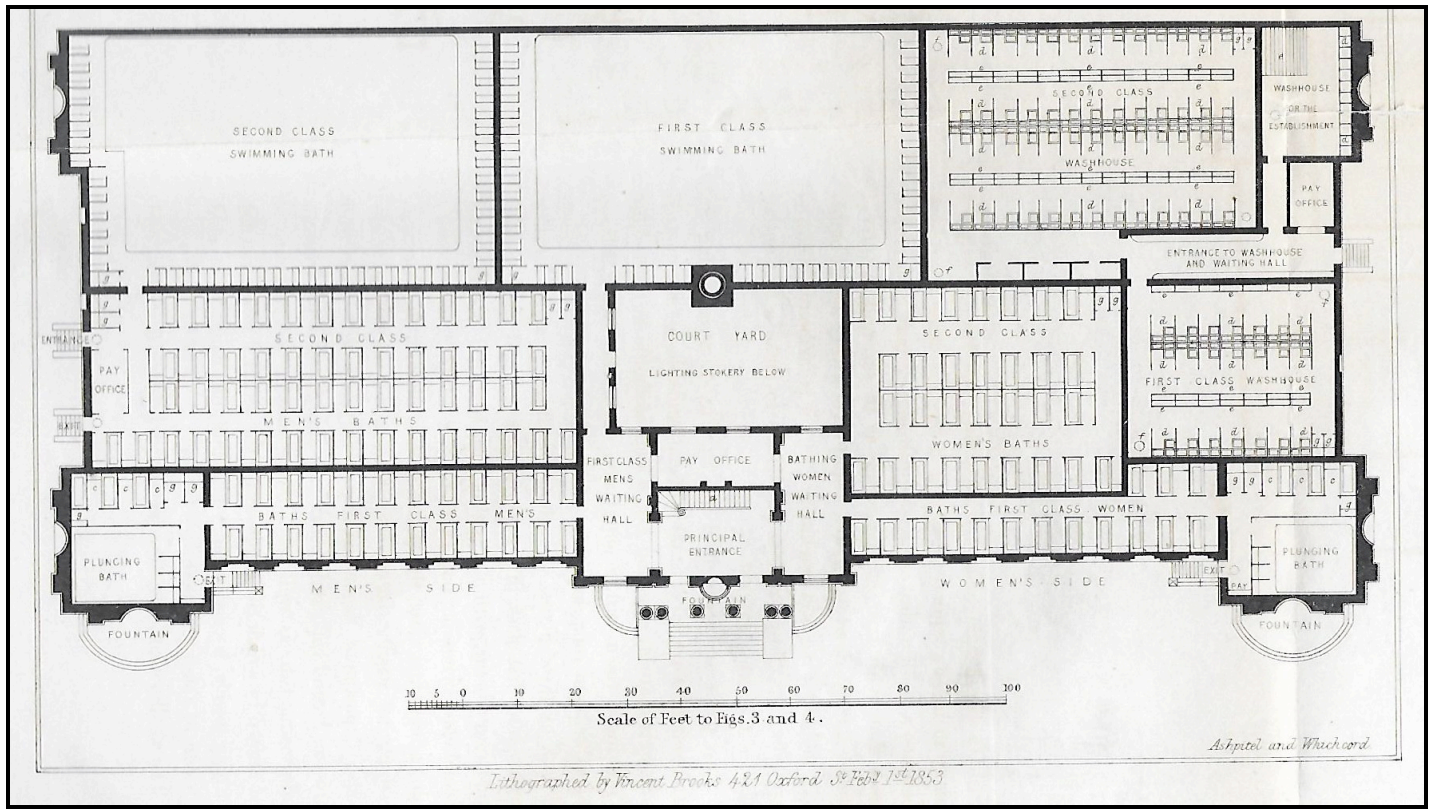


Fig 1.

BATHS OF DIOCLETIAN ROME.

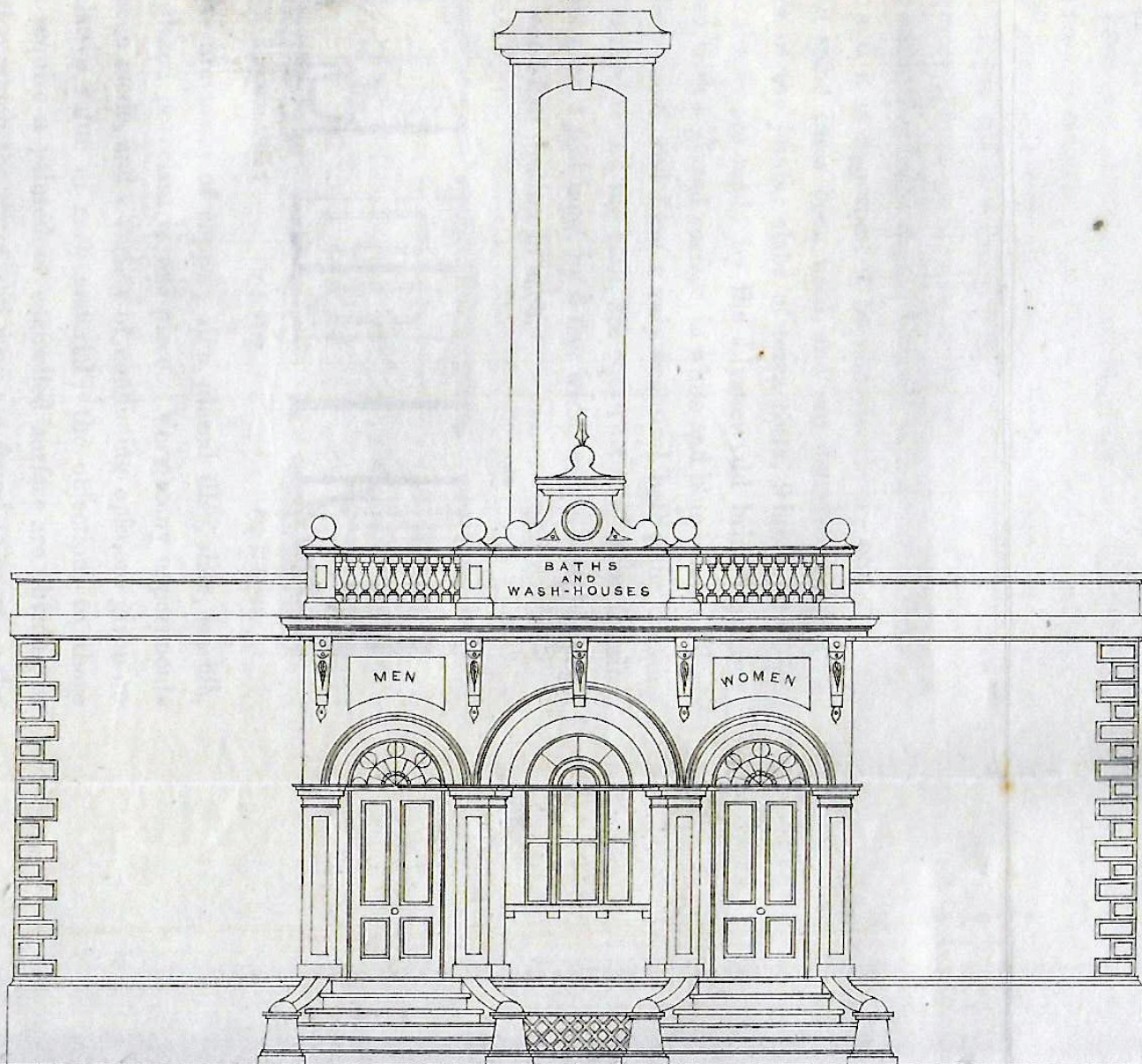


BATHS OF DIOCLETIAN

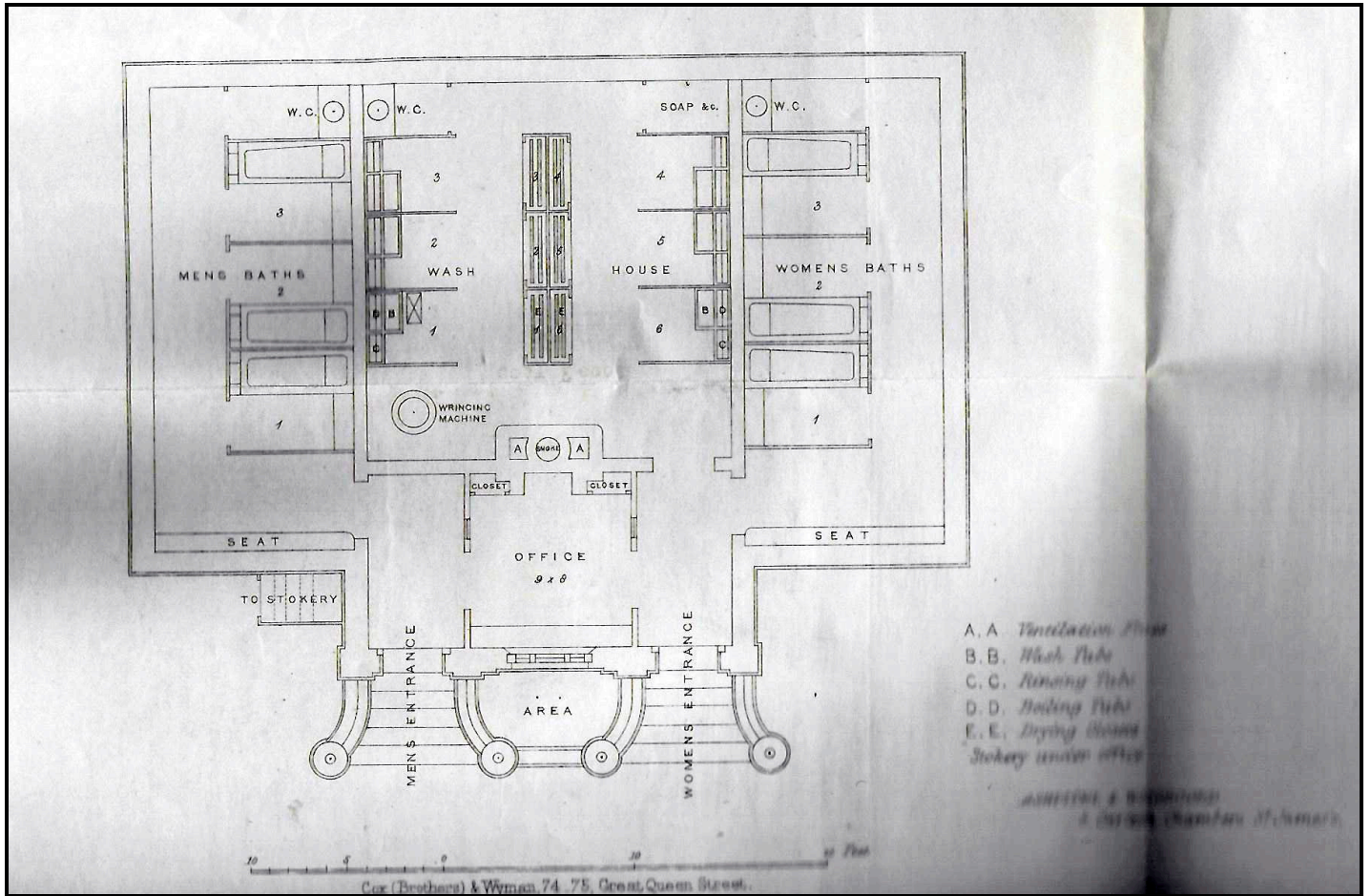


BATHS OF DIOCLETIAN

SMALL ESTABLISHMENT
COST £ 800.



SMALL ESTABLISHMENT



SMALL ESTABLISHMENT